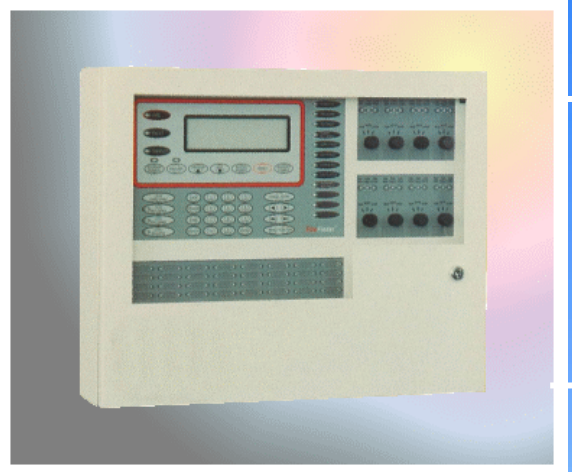
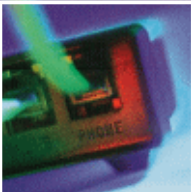


SYSTEM OVERVIEW



PRINTER

- Printout of activity , time and date
- Printout of event log
- Panel mounting or externally located



MODEM/Line Manager™

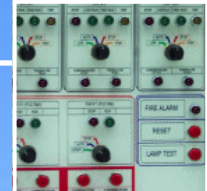
- Connects *FireFinder™* to a telephone line for remote access
- Remotely upload / download software
- Remotely interrogate panel



The *FireFinder™* is the product of combining state of the art Ampac Hardware and the world-renown Apollo XP95 protocol.

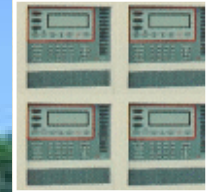
The system has been designed for remote operation and programming if required and can be integrated with a modem, laptop or printer to aids its ease of use and give the power of control to the operator.

The *FireFinder™* system has been designed to be adaptable—to incorporate major enhancements as technology develops and emerges.



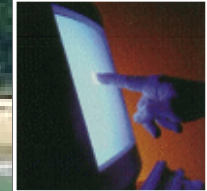
16 INPUT/OUTPUT MODULES

- 16 controls for equipment by switches
- 16 status for equipment directly to 16 LEDs
- Customised front panel mimic for control and indication of equipment



NETWORK CAPABILITIES

- Multi *FireFinder™* panels may be connected
- Local or site wide control is achievable via any *FireFinder™* panel on the communications loop
- Control & indication is available between panels



SMARTGRAPHICS

- Graphical presentation of building layout on-screen
- Touch screen colour graphics (optional)
- Displays location and status of devices
- Full system control & event logging capabilities



HIGH LEVEL INTERFACE

- A low cost option to transfer information from the *FireFinder™* to a Building Management System, EWIS, nurse call or paging system
- High speed RS232 communications protocol



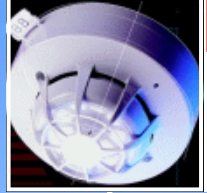
LCD REPEATER PANEL

- Compact construction
- The LCD mimic provides key personnel the ability to interrogate the status of the *FireFinder™* system from a remote location



DISCOVERY/XP95 DETECTOR

- Thermal, photo optical and ionisation detectors
- Analogue technology
- Unique addressing with the XPERT card
- No electronic in the base



DISCOVERY MULTISENSOR

- Dual sensor Photo optical & thermal
- Programmable to suit environment
- Ideal for reducing unwanted alarms



XP95 MANUAL CALL POINT

- Has indicator for easy identification when in alarm
- Key makes testing & commission a simple task
- XP95 device is incorporated in housing



XP95 INPUT & OUTPUT UNIT

- Loop-powered relay
- Monitored & unmonitored opto-coupled input
- Reports fault, switch open and closed levels
- Uses standard housing, DIN rail mounting available



MULTI INPUT & OUTPUT UNIT

- Loop powered and external powered relay
- Monitored & unmonitored opto-coupled input
- Reports fault, switch open and closed levels
- Uses standard housing, DIN rail mounting available



XP95 SHORT CIRCUIT ISOLATOR

- Protects the XP95 loop from short-circuit fault
- Prevents whole loop from becoming inoperable
- DIN rail mounting available